



Pre-Conference Fieldtrip – 1st circular

From the Past to the Future – Lower Austrian Quaternary type localities and their potential for paleoenvironmental reconstructions

Krems, Lower Austria - 7-8 April 2015

This fieldtrip will lead to Krems/Danube, 70 km W of Vienna. Loess-paleosol sequences (LPS) in Krems, Göttweig, and Paudorf were popularized by J. Fink in the 1960s as type localities for Quaternary stratigraphy. However, these LPS are located in slope positions, therefore many paleosols are eroded or polygenetic. Since fundamental chronological revisions in the 1970s, these LPS were practically untouched. At present, the still accessible tremendous outcrops are studied in detail related to their potential for paleoenvironmental reconstructions and new sedimentological, micromorphological and chronological data are now available. During the field trip, we present recently published data of the LPS Paudorf. A highlight is the vast outcrop Krems-Schießstätte. Around the corner is the Late Paleolithic site Krems-Wachtberg, which will be soon covered by buildings. This fieldtrip may be one last possibility to see this interesting high-resolution loess record of the MIS 3/2-transition.

Preliminary program:

07.04.2015	12:00	Departure at Vienna Floridsdorf metro station
	13:00	Krems-Schießstätte: The longest LPS in Austria; Early and Middle Pleistocene pedocomplexes
	16:00	Paleolithic site of Krems-Wachtberg: Initial boreal and tundra paleosols in loess of last glacial
	18:00	Check in at the Weinbauschule Krems, Dinner at typical Heurigen vine restaurant
08.04.2015	09:00	(After breakfast at the Weinbauschule) Paudorf locus typicus (MIS 10-MIS 5)
	11:30	Göttweig-Furth and Götweig-Aigen, Middle and Late Pleistocene Pedocomplexes
	14:00	Transfer to Dan Yaalon Symposium, Vienna

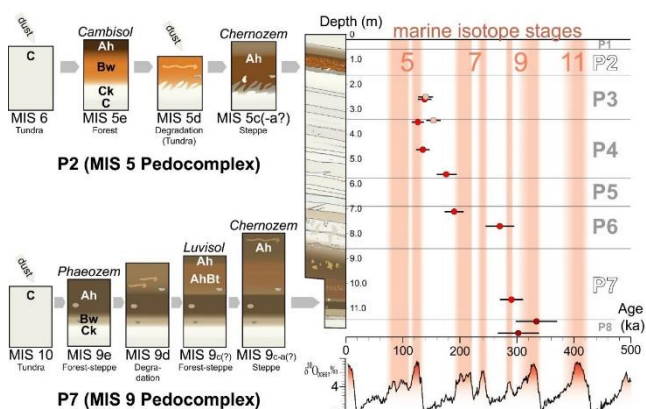
Approximate costs:

2-Day Fieldtrip:	40 €
Overnight stay incl. breakfast:	25 €
Dinner at Heurigen restaurant:	paid individually

We kindly ask you to send a **statement of interest until 31st of December**. After that you will receive registration forms. For the statement and further questions please contact: tobias.sprafke@uni-wuerzburg.de

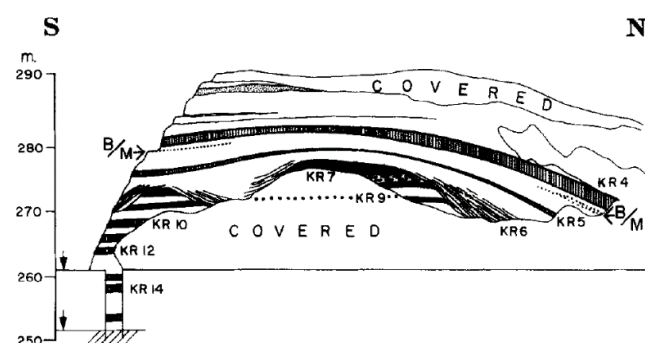
We would be very happy to guide you on this field trip!

Tobias Sprafke, Birgit Terhorst*, Robert Peticzka°, Simon Meyer-Heintze**



Paudorf locus typicus: Pedocomplex development and chronology
Sprafke et al. (2014): From micromorphology to paleoenvironment. The MIS10 to MIS 5 record in Paudorf (Lower Austria). *Catena* 117. 60-72.

*Institute of Geography and Geology, University of Würzburg
°Institute of Geography and Regional Research, University of Vienna



Krems-Schießstätte: Note the B/M (Brunhes/Matuyama reversal)!
Fink & Kukla (1977): Pleistocene Climates in Central Europe: At least 17 Interalacials after the Olduvai Event. *Quaternary Research* 7, 363-371.