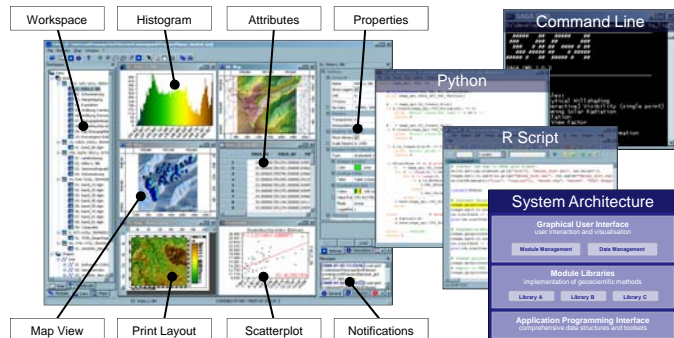




Digital Terrain Analysis and Soil Mapping

What is SAGA

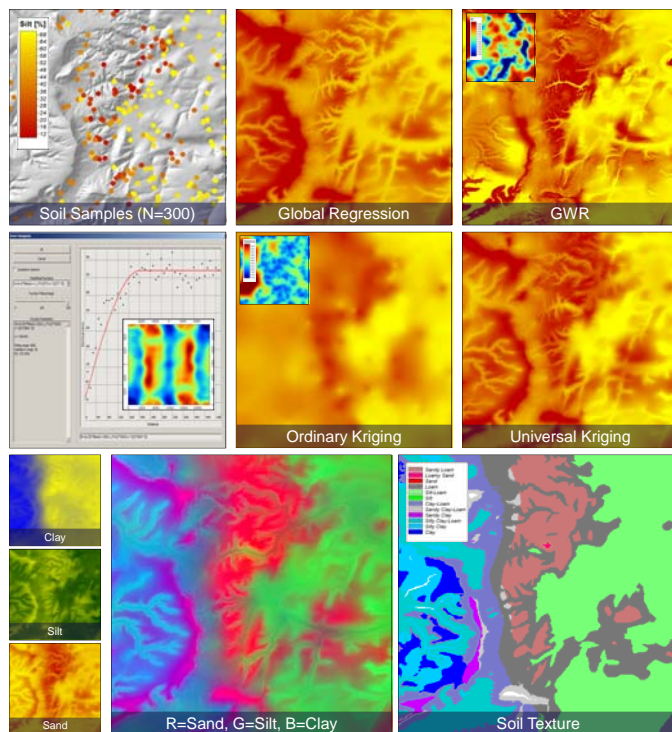
SAGA is a **Geographic Information System** software with immense capabilities for geodata processing and analysis. SAGA is programmed in the object oriented C++ language and supports the implementation of new functions with a very effective **Application Programming Interface (API)**. Functions are organised as modules in framework independent **Module Libraries** and can be accessed via SAGA's **Graphical User Interface (GUI)** or various scripting environments.



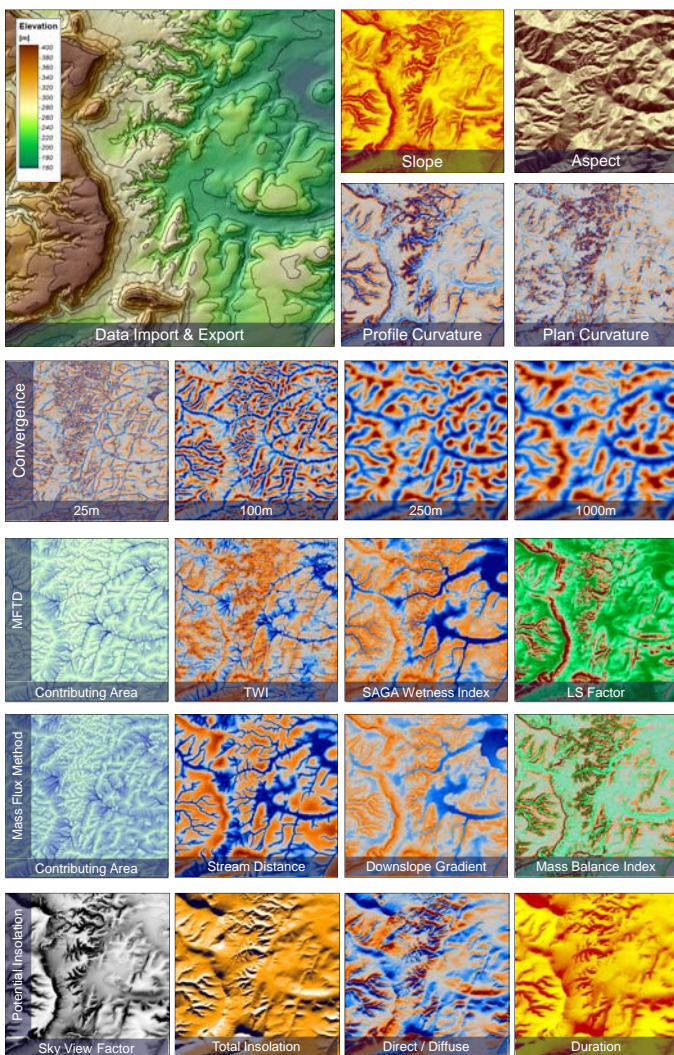
Some key features:

- Object oriented system design
- Modular structure allows framework independent function development
- API with strong support for geodata handling
- GUI for intuitive data management, analysis and visualization
- Far more than 450 freely available functions for geodata analysis
- Runs on Linux as well as on Windows operating systems
- Portable software running without installation even from memory sticks
- Free and Open Source Software

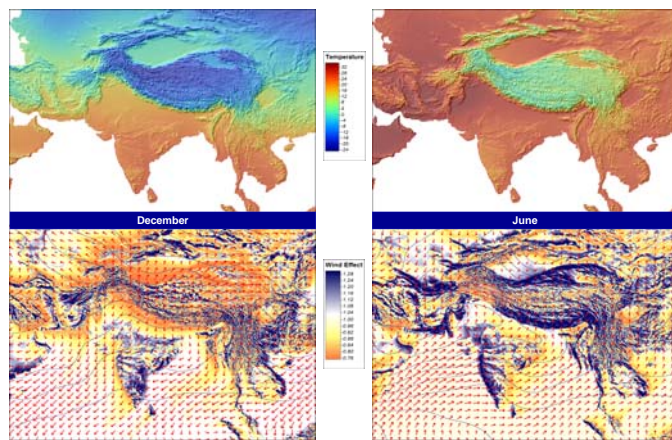
Regionalisation of Soil Properties



Terrain Parameters



Climate Variables



Relief Segmentation

