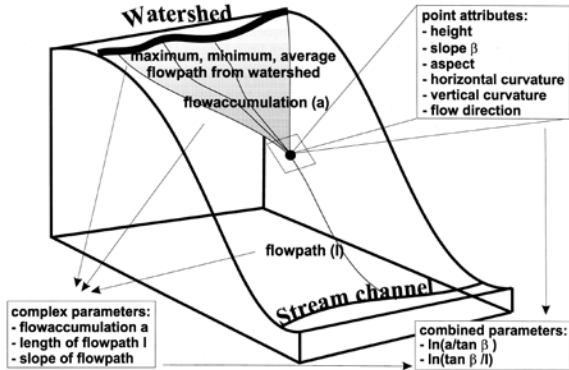


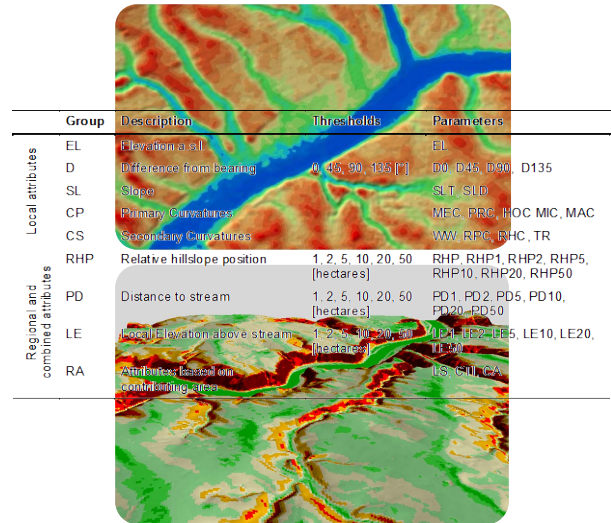
# Multi- und hyper-skalige Reliefanalyse und Bodenprognose

Thorsten Behrens<sup>1,2</sup>, Karsten Schmidt<sup>1</sup>, Ulrich Steinrücken<sup>2</sup>, Thomas Scholten<sup>1</sup>

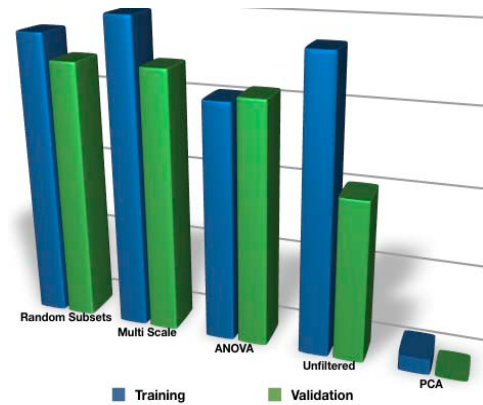
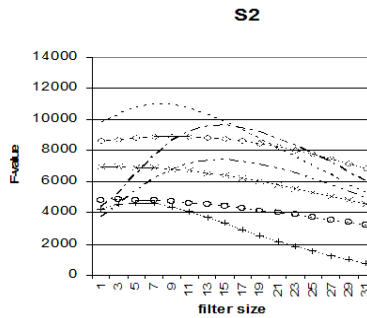
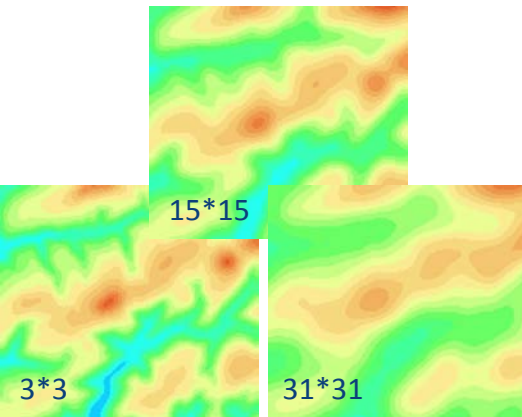
## Einschränkungen der herkömmlichen digitalen Reliefanalyse Nur "catenare" Informationen



Schmitt und Dikau, 1999



## Multi-skalige digitale Reliefanalyse Der Filter-Ansatz



## Hyper-skalige digitale Reliefanalyse ConMap – Contextual mapping

